



GORDON J. CHRISTENSEN

# CLINICIANS REPORT<sup>®</sup>

Reprint

Reprinted February 2010, with permission, from Volume 3, Issue 2, February 2010, Page 4

## Universal, Adjustable Wrench with Drivers and Torque Settings for Most Implant Systems

Dentists provide implant restoration more frequently and may be restoring a variety of implant brands. This one torque wrench offers drivers for most implant systems. It is fully adjustable and has nine torque settings (15, 20, 25, 30, 35, 40, 45, 50, and 60 Ncm). Torque settings lock into select location for accuracy and repeatability. Ratchet clutch disengages when torque is applied to avoid over torque. Wrench head accepts the standard 4 mm square connection. More than 43 drivers and a thumb knob driver socket may be purchased separately to customize for each practice's needs.

### Precise Adjustable Torque Wrench



**ITL Dental**

800-277-0073 • [www.itldental.com](http://www.itldental.com)

**\$425/Wrench**

**\$30/Hex driver (43**

**sizes/lengths; 3 specialty drivers also available)**

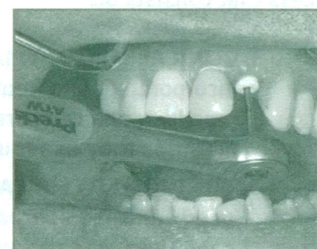
### Advantages:

- Wrench was easy to use
- Torque adjustments were stable yet easy to adjust
- Wrench is autoclavable
- Easy to maintain; no lubrication required
- Durable construction
- Many settings allow one wrench to be used for multiple purposes
- Small size

### Limitation:

- Additional cost of extra drivers can get high

One torque wrench may be used with most implant systems; accepts standard 4 mm square connection for drivers



**CR Conclusions:** 67% of 21 CR Evaluators stated they would incorporate Precise Adjustable Torque Wrench into their practice. 100% rated it excellent or good and worthy of trial by colleagues.